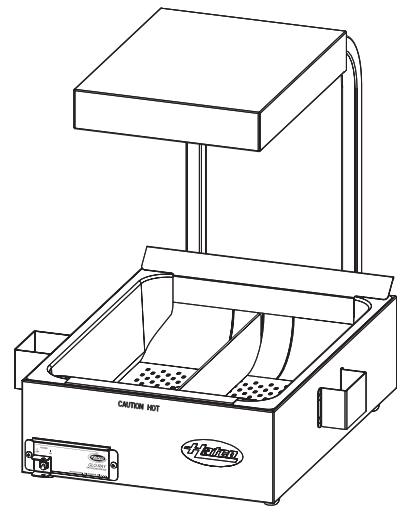
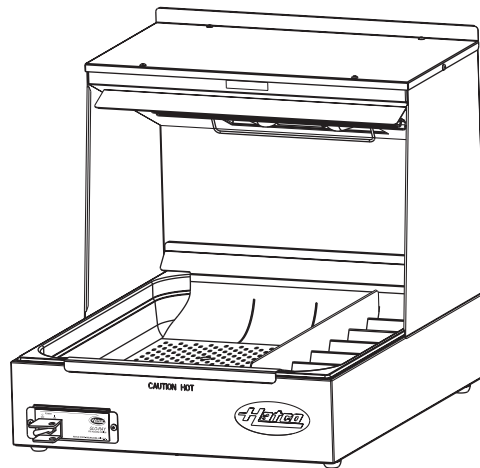




Glo-Ray[®] Fry Holding Station

GRFHS Series

GRFHS-16	GRFHS-21	GRFHS-26
GRFHS-PT16	GRFHS-PTT21	GRFHS-PT26



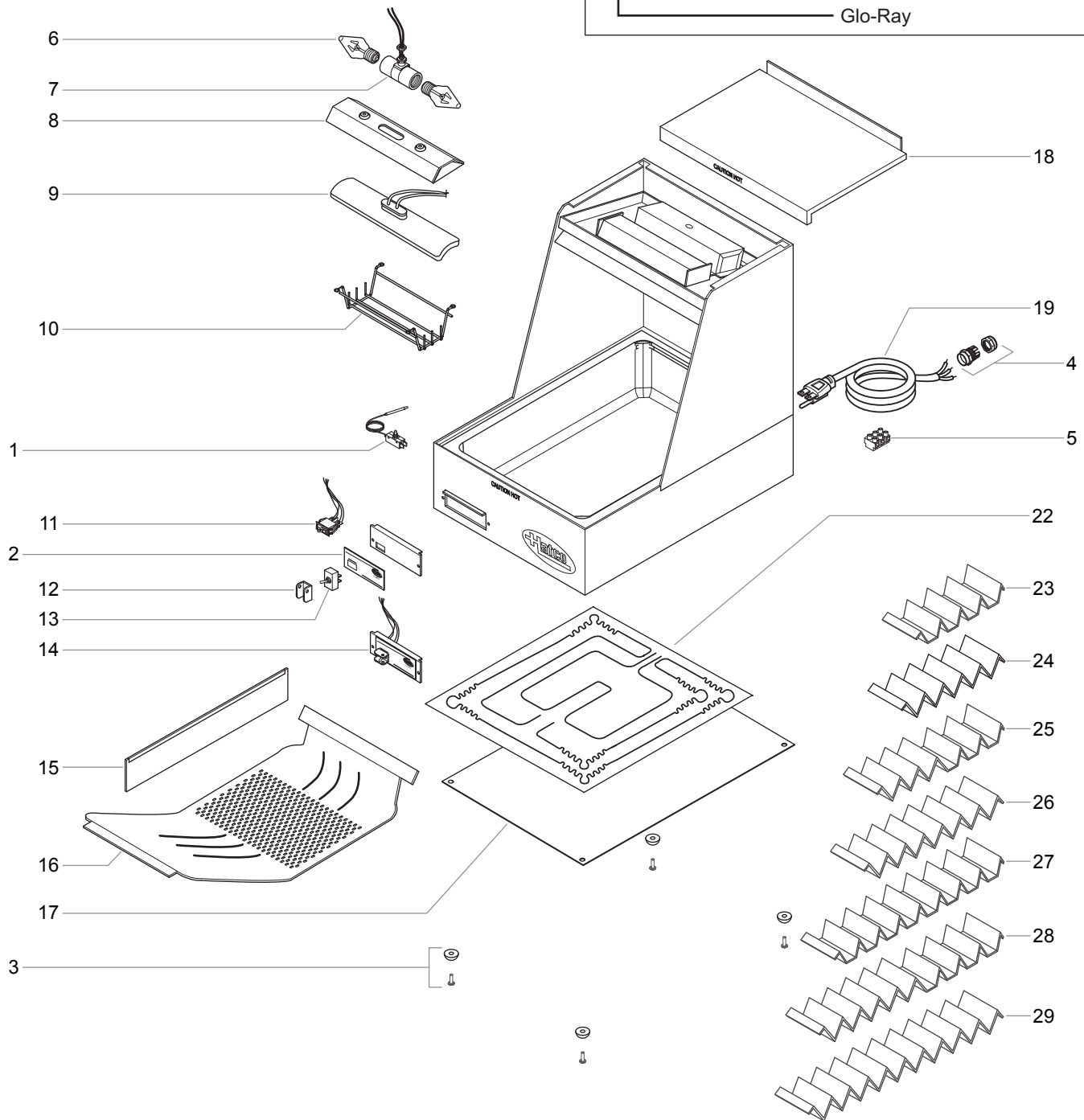
REPLACEMENT PARTS LIST

HATCO GLO-RAY® FRY HOLDING STATION

GRFHS-16, -21, -26 Models

Model Designation
GRFHS - PTXX

- Width (inches)
- No Characters = Bin
- PT = Pass-Through
- PTT = Pass-Through Tunnel
- Fry Holding Station
- Glo-Ray

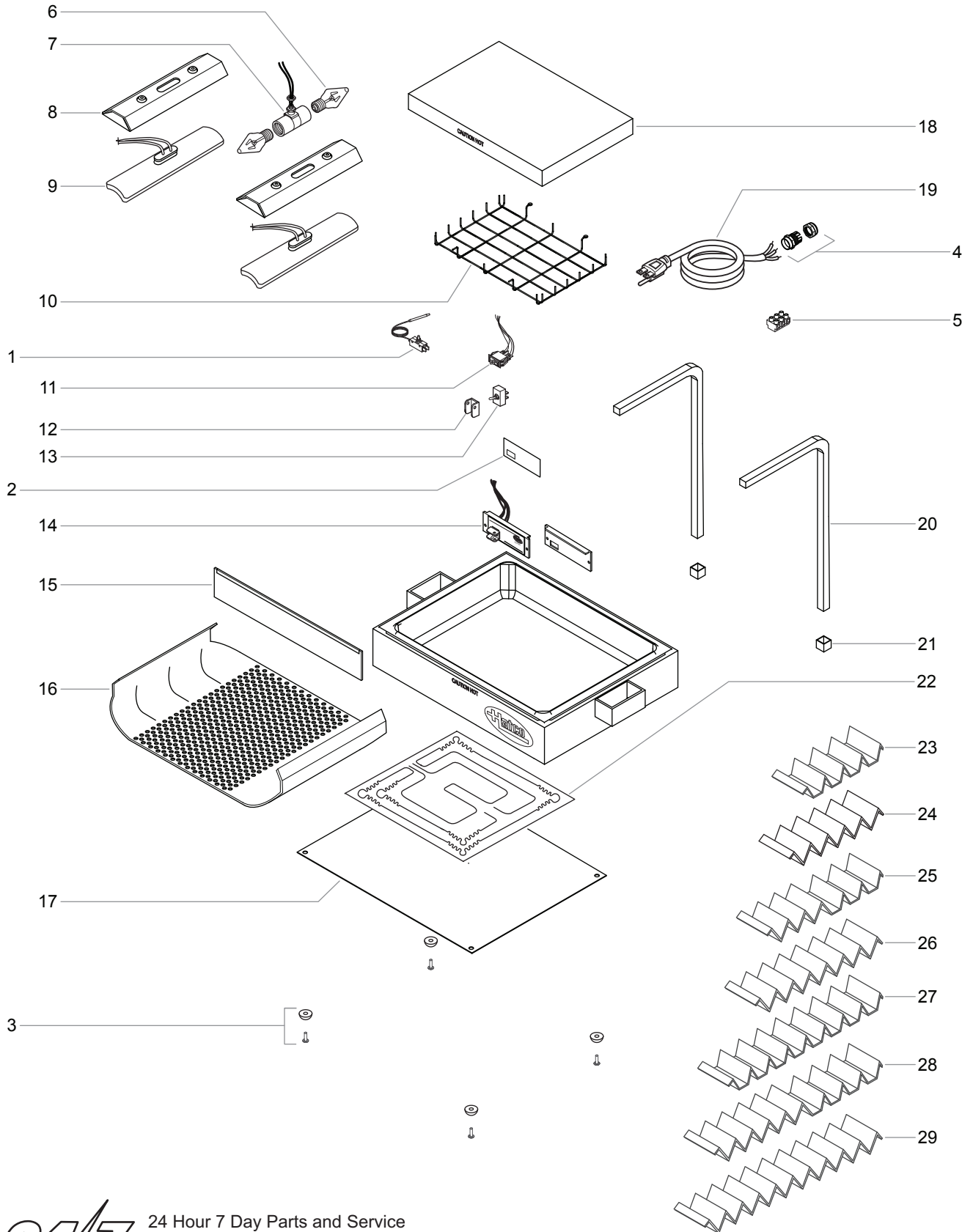


CAUTION

Use of replacement parts other than those supplied by Hatco Corporation may result in damage to unit or injury to personnel and will void all warranties.

HATCO GLO-RAY® FRY HOLDING STATION

GRFHS-PT16, -PT26, -PTT21 Models



24 Hour 7 Day Parts and Service Assistance available in the United States and Canada by calling (800) 558-0607.



PARTS COMMON TO ALL GRFHS MODELS

Item	Description	Part No.	Qty.	Item	Description	Part No.	Qty.
1	Thermostat, Control	R02.16.066.00	1	4	Cord Grip Assembly	R02.20.259.00	1
2	Control Decal	07.03.319.00	1	5	Terminal Block,3 Pole	R02.15.030.00	1
3	Rubber Foot Assembly	R05.30.029.00	4				

PARTS SPECIFIC TO MODEL GRFHS-16

Item	Description	100 V	120 V	220–230 V (CE)	230–240 V (CE)
6	Light Bulb, 60 W (Qty. 2)	02.30.043.00	02.30.043.00	02.30.058.00	02.30.058.00
7	Light Socket, Dual with Leads	02.30.087.00	02.30.087.00	02.30.087.00	02.30.087.00
8	Heat Reflector Assembly	R04.25.208.00	R04.25.208.00	R04.25.208.00	R04.25.208.00
9	Heating Element, Ceramic — Upper	02.07.014.00	02.07.001.00	02.07.015.00	02.07.003.00
10	Wire Guard	04.25.226.00	04.25.226.00	04.25.226.00	04.25.226.00
11	On/Off Rocker Switch Kit *	R00.02.0028.00	R00.02.0028.00	R00.02.0029.00	R00.02.0029.00
12	Guard, Toggle Switch †	04.01.038.00	04.01.038.00	04.01.038.00	04.01.038.00
13	On/Off Toggle Switch †	R02.19.008A.00	R02.19.008A.00	R02.19.008A.00	R02.19.008A.00
14	On/Off Toggle Switch Retro-fit Kit	---	---	---	---
15	Pan Divider	04.25.297.00	04.25.297.00	04.25.297.00	04.25.297.00
16	Trivet	04.25.327.00	04.25.327.00	04.25.327.00	04.25.327.00
17	Cover, Bottom	04.25.325.00	04.25.325.00	04.25.325.00	04.25.325.00
18	Cover, Top	04.25.324.00	04.25.324.00	04.25.324.00	04.25.324.00
19	Power Cord and Plug	R02.18.154.00	R02.18.154.00	02.18.077.00	02.18.066.00
20	Support Post (Qty. 2)	---	---	---	---
21	Cap Plug (Qty. 2)	---	---	---	---
22	Blanket Element, Base, 220 W	02.05.504.00	02.05.504.00	02.05.528.00	02.05.528.00
23	Fry Box Ribbon — 4 Pleat	04.25.356.00	04.25.356.00	04.25.356.00	04.25.356.00
24	Fry Bag Ribbon — 5 Pleat	04.25.350.00	04.25.350.00	04.25.350.00	04.25.350.00
25	Fry Box/Bag Combo Ribbon — 6 Pleat	---	---	---	---
26	Fry Bag Ribbon — 7 Pleat	---	---	---	---
27	Fry Box Ribbon — 8 Pleat	---	---	---	---
28	Fry Box/Bag Combo Ribbon — 9 Pleat	---	---	---	---
29	Fry Bag Ribbon — 10 Pleat	---	---	---	---
	Electrical Drawing	HS1-5537	HS1-5537	HS1-5537	HS1-5537

The shaded areas contain information for **International models only**.

* Item 11 only used on GRFHS-16 units manufactured before December, 2002.

† Items 12 and 13 only used on GRFHS-16 units manufactured during or after December, 2002.

NOTE: The last four digits in a ten digit numerical serial number are the manufacturing date code.

Example: Serial number 9625060751 has a date code of "0751" which indicates the following: 0751



PARTS SPECIFIC TO MODEL GRFHS-PT16

Item	Description	100 V	120 V	220–230 V (CE)	230–240 V (CE)
6	Light Bulb, 60 W (Qty. 2)	---	02.30.043.00	---	---
7	Light Socket, Dual with Leads	---	02.30.087.00	---	---
8	Heat Reflector Assembly	---	04.25.355.00	---	---
9	Heating Element, Ceramic — Upper	---	02.07.001.00	---	---
10	Wire Guard	---	04.08.117.00	---	---
11	On/Off Rocker Switch Kit	---	---	---	---
12	Guard, Toggle Switch	---	04.01.038.00	---	---
13	On/Off Toggle Switch	---	R02.19.008A.00	---	---
14	On/Off Toggle Switch Retro-fit Kit	---	---	---	---
15	Pan Divider	---	04.25.297.00	---	---
16	Trivet	---	04.25.327.00	---	---
17	Cover, Bottom	---	04.25.325.00	---	---
18	Cover, Top	---	04.25.496.00	---	---
19	Power Cord and Plug	---	R02.18.154.00	---	---
20	Support Post (Qty. 2)	---	---	---	---
21	Cap Plug (Qty. 2)	---	02.20.055.00	---	---
22	Blanket Element, Base, 220 W	---	02.05.504.00	---	---
23	Fry Box Ribbon — 4 Pleat	---	04.25.356.00	---	---
24	Fry Bag Ribbon — 5 Pleat	---	04.25.350.00	---	---
25	Fry Box/Bag Combo Ribbon — 6 Pleat	---	---	---	---
26	Fry Bag Ribbon — 7 Pleat	---	---	---	---
27	Fry Box Ribbon — 8 Pleat	---	---	---	---
28	Fry Box/Bag Combo Ribbon — 9 Pleat	---	---	---	---
29	Fry Bag Ribbon — 10 Pleat	---	---	---	---
	Electrical Drawing	---	10.01.763	---	---

The shaded areas contain information for **International models only**.

PARTS SPECIFIC TO MODEL GRFHS-21

Item	Description	100 V	120 V	220–230 V (CE)	230–240 V (CE)
6	Light Bulb, 60 W (Qty. 2)	02.30.043.00	02.30.043.00	02.30.058.00	02.30.058.00
7	Light Socket, Dual with Leads	02.30.087.00	02.30.087.00	02.30.087.00	02.30.087.00
8	Heat Reflector Assembly (Qty 2)	R04.25.223.00	R04.25.223.00	R04.25.223.00	R04.25.223.00
9	Heating Element, Ceramic — Upper (Qty. 2)	02.07.007.00	02.07.006.00	02.07.017.00	02.07.013.00
10	Wire Guard	04.25.311.00	04.25.311.00	04.25.311.00	04.25.311.00
11	On/Off Rocker Switch Kit	---	---	---	---
12	Guard, Toggle Switch †	04.01.038.00	04.01.038.00	04.01.038.00	04.01.038.00
13	On/Off Toggle Switch †	R02.19.008A.00	R02.19.008A.00	R02.19.008A.00	R02.19.008A.00
14	On/Off Toggle Switch Retro-fit Kit •	R00.02.0030.00	R00.02.0030.00	R00.02.0030.00	R00.02.0030.00
15	Pan Divider	04.25.316.00	04.25.316.00	04.25.316.00	04.25.316.00
16	Trivet	04.25.304.00	04.25.304.00	04.25.304.00	04.25.304.00
17	Cover, Bottom	04.25.296.00	04.25.296.00	04.25.296.00	04.25.296.00
18	Cover, Top	04.25.298.00	04.25.298.00	04.25.298.00	04.25.298.00
19	Power Cord and Plug	R02.18.154.00	R02.18.154.00	02.18.077.00	02.18.066.00
20	Support Post (Qty. 2)	---	---	---	---
21	Cap Plug (Qty. 2)	---	---	---	---
22	Blanket Element, Base, 320 W	02.05.486.00	02.05.486.00	02.05.494.00	02.05.494.00
23	Fry Box Ribbon — 4 Pleat	---	---	---	---
24	Fry Bag Ribbon — 5 Pleat	04.25.314.00	04.25.314.00	04.25.314.00	04.25.314.00
25	Fry Box/Bag Combo Ribbon — 6 Pleat	04.25.315.00	04.25.315.00	04.25.315.00	04.25.315.00
26	Fry Bag Ribbon — 7 Pleat	04.25.313.00	04.25.313.00	04.25.313.00	04.25.313.00
27	Fry Box Ribbon — 8 Pleat	---	---	---	---
28	Fry Box/Bag Combo Ribbon — 9 Pleat	---	---	---	---
29	Fry Bag Ribbon — 10 Pleat	---	---	---	---
	Electrical Drawing	HS1-5358	HS1-5537	HS1-5537	HS1-5537

The shaded areas contain information for **International models only**.

† Items 12 and 13 only used on GRFHS-21 units manufactured during or after December, 2002.

• Item 14 only used on GRFHS-21 units manufactured before December, 2002.

PARTS SPECIFIC TO MODEL GRFHS-PTT21

Item	Description	100 V	120 V	220–230 V (CE)	230–240 V (CE)
6	Light Bulb, 60 W (Qty. 2)	---	02.30.043.00	02.30.058.00	---
7	Light Socket, Dual with Leads	---	02.30.087.00	02.30.087.00	---
8	Heat Reflector Assembly (Qty. 2)	---	R04.25.208.00	R04.25.208.00	---
9	Heating Element, Ceramic — Upper, 650 W (Qty. 2)	---	02.07.008.00	02.07.010.00	---
10	Wire Guard	---	04.25.354.00	04.25.354.00	---
11	On/Off Rocker Switch Kit	---	---	---	---
12	Guard, Toggle Switch †	---	04.01.038.00	04.01.038.00	---
13	On/Off Toggle Switch †	---	R02.19.008A.00	R02.19.008A.00	---
14	On/Off Toggle Switch Retro-fit Kit •	---	R00.02.0030.00	R00.02.0030.00	---
15	Pan Divider	---	04.25.349.00	04.25.349.00	---
16	Trivet	---	04.25.348.00	04.25.348.00	---
17	Cover, Bottom	---	04.25.336.00	04.25.336.00	---
18	Cover, Top	---	---	---	---
19	Power Cord and Plug	---	R02.18.154.00	02.18.077.00	---
20	Support Post (Qty. 2)	---	---	---	---
21	Cap Plug (Qty. 2)	---	---	---	---
22	Blanket Element, Base, 320 W	---	02.05.351.00	02.05.534.00	---
23	Fry Box Ribbon — 4 Pleat	---	---	---	---
24	Fry Bag Ribbon — 5 Pleat	---	---	04.25.350.00	---
25	Fry Box/Bag Combo Ribbon — 6 Pleat	---	---	---	---
26	Fry Bag Ribbon — 7 Pleat	---	---	---	---
27	Fry Box Ribbon — 8 Pleat (Qty. 2)	---	04.25.356.00	---	---
28	Fry Box/Bag Combo Ribbon — 9 Pleat ‡	---	See Note	---	---
29	Fry Bag Ribbon — 10 Pleat (Qty. 2)	---	04.25.350.00	---	---
	Electrical Drawing	---	HS1-5537	10-01-098	---

The shaded areas contain information for **International models only**.

† Items 12 and 13 only used on GRFHS-PTT21 units manufactured during or after December, 2002.

• Item 14 only used on GRFHS-PTT21 units manufactured before December, 2002.

‡ Item 28 utilizes one each of items 23 and 24.

PARTS SPECIFIC TO MODEL GRFHS-26

Item	Description	100 V	120 V	220–230 V (CE)	230–240 V (CE)
6	Light Bulb, 60 W (Qty. 2)	---	02.30.043.00	02.30.058.00	02.30.058.00
7	Light Socket, Dual with Leads	---	02.30.087.00	02.30.087.00	02.30.087.00
8	Heat Reflector Assembly	---	R04.25.223	R04.25.223	R04.25.223
9	Heating Element, Ceramic — Upper	---	02.07.006.00	02.07.017.00	02.07.013.00
10	Wire Guard	---	04.25.225	04.25.225	04.25.225
11	On/Off Rocker Switch Kit	---	---	---	---
12	Guard, Toggle Switch †	---	04.01.038.00	04.01.038.00	04.01.038.00
13	On/Off Toggle Switch †	---	R02.19.008A.00	R02.19.008A.00	R02.19.008A.00
14	On/Off Toggle Switch Retro-fit Kit •	---	R00.02.0030.00	R00.02.0030.00	00.02.0030.00
15	Pan Divider	---	04.25.297.00	04.25.297.00	04.25.297.00
16	Trivet	---	04.25.335	04.25.335	04.25.335
17	Cover, Bottom	---	04.25.336	04.25.336	04.25.336
18	Cover, Top	---	04.25.337	04.25.337	04.25.337
19	Power Cord and Plug	---	R02.18.154.00	02.18.077.00	02.18.066.00
20	Support Post (Qty. 2)	---	---	---	---
21	Cap Plug (Qty. 2)	---	---	---	---
22	Blanket Element, Base, 220 W	---	02.05.535	02.05.535	02.05.535
23	Fry Box Ribbon — 4 Pleat	---	04.25.356.00	04.25.356.00	04.25.356.00
24	Fry Bag Ribbon — 5 Pleat	---	04.25.350.00	04.25.350.00	04.25.350.00
25	Fry Box/Bag Combo Ribbon — 6 Pleat	---	---	---	---
26	Fry Bag Ribbon — 7 Pleat	---	---	---	---
27	Fry Box Ribbon — 8 Pleat	---	---	---	---
28	Fry Box/Bag Combo Ribbon — 9 Pleat	---	---	---	---
29	Fry Bag Ribbon — 10 Pleat	---	---	---	---
	Electrical Drawing	---	HS1-5696	HS1-6040	HS1-6040

The shaded areas contain information for **International models only**.

† Items 12 and 13 only used on GRFHS-26 units manufactured during or after December, 2002.

• Item 14 only used on GRFHS-26 units manufactured before December, 2002.

PARTS SPECIFIC TO MODEL GRFHS-PT26

Item	Description	100 V	120 V	220–230 V (CE)	230–240 V (CE)
6	Light Bulb, 60 W (Qty. 2)	---	02.30.043.00	02.30.058.00	02.30.058.00
7	Light Socket, Dual with Leads	---	02.30.087.00	02.30.087.00	02.30.087.00
8	Heat Reflector Assembly	---	R04.25.208.00	R04.25.223.00	R04.25.223.00
9	Heating Element, Ceramic — Upper	---	02.07.002.00	02.07.017.00	02.07.013.00
10	Wire Guard	---	04.25.354.00	04.25.354.00	04.25.354.00
11	On/Off Rocker Switch Kit	---	---	---	---
12	Guard, Toggle Switch †	---	04.01.038.00	04.01.038.00	04.01.038.00
13	On/Off Toggle Switch †	---	R02.19.008A.00	R02.19.008A.00	R02.19.008A.00
14	On/Off Toggle Switch Retro-fit Kit •	---	R00.02.0030.00	R00.02.0030.00	00.02.0030.00
15	Pan Divider	---	04.25.349.00	04.25.349.00	04.25.349.00
16	Trivet	---	04.25.327.00	04.25.327.00	04.25.327.00
17	Cover, Bottom	---	04.25.336.00	04.25.336.00	04.25.336.00
18	Cover, Top	---	04.25.353.00	04.25.353.00	04.25.353.00
19	Power Cord and Plug	---	R02.18.154.00	02.18.077.00	02.18.066.00
20	Support Post (Qty. 2)	---	---	---	---
21	Cap Plug (Qty. 2)	---	---	---	---
22	Blanket Element, Base, 220 W	---	02.05.531.00	02.05.534.00	02.05.534.00
23	Fry Box Ribbon — 4 Pleat	---	04.25.356.00	04.25.356.00	04.25.356.00
24	Fry Bag Ribbon — 5 Pleat	---	04.25.350.00	04.25.350.00	04.25.350.00
25	Fry Box/Bag Combo Ribbon — 6 Pleat	---	---	---	---
26	Fry Bag Ribbon — 7 Pleat	---	---	---	---
27	Fry Box Ribbon — 8 Pleat (Qty. 2)	---	04.25.356.00	04.25.356.00	04.25.356.00
28	Fry Box/Bag Combo Ribbon — 9 Pleat ‡	---	See Note	See Note	See Note
29	Fry Bag Ribbon — 10 Pleat (Qty. 2)	---	04.25.350.00	04.25.350.00	04.25.350.00
	Electrical Drawing	---	HS1-5537	HS1-5537	HS1-5537

The shaded areas contain information for **International models only**.

† Items 12 and 13 only used on GRFHS-PT26 units manufactured during or after December, 2002.

• Item 14 only used on GRFHS-PT26 units manufactured before December, 2002.

‡ Item 28 utilizes one each of items 23 and 24.

HATCO AUTHORIZED PARTS DISTRIBUTORS

ALABAMA

Jones McLeod Appl. Svc.
Birmingham 205-251-0159

ARIZONA

Service Solutions Group
Phoenix 602-234-2443

Byassee Equipment Co.
Phoenix 602-252-0402

CALIFORNIA

Industrial Electric
Commercial Parts & Service, Inc.
Huntington Beach 714-379-7100

Chapman Appl. Service
San Diego 619-298-7106

P & D Appliance
Commercial Parts & Service, Inc.
S. San Francisco 650-635-1900

COLORADO

Hawkins Commercial Appliance
Englewood 303-781-5548

FLORIDA

Whaley Foodservice Repair
Jacksonville 904-725-7800

3Wire Nass Service Co., Inc.
Orlando 407-425-2681

B.G.S.I.
Pompano Beach 954-971-0456

Comm. Appliance Service
Tampa 813-663-0313

GEORGIA

TWC Services
Mableton 770-438-9797

Heritage Service Group
Norcross 866-388-9837

Southeastern Rest. Svc.
Norcross 770-446-6177

HAWAII

Burney's Comm. Service, Inc.
Honolulu 808-848-1466

Food Equip Parts & Service
Honolulu 808-847-4871

ILLINOIS

Parts Town
Lombard 708-865-7278

Eichenauer Elec. Service
Decatur 217-429-4229

Midwest Elec. Appl. Service
Elmhurst 630-279-8000

Cone's Repair Service
Moline 309-797-5323

INDIANA

GCS Service
Indianapolis 317-545-9655

IOWA

Electric Motor Service Co.
Davenport 319-323-1823

Goodwin Tucker Group
Des Moines 515-262-9308

KENTUCKY

Service Solutions Group
Lexington 859-254-8854

Service Solutions Group
Louisville 502-451-5411

LOUISIANA

Chandlers Parts & Service
Baton Rouge 225-272-6620

MARYLAND

Electric Motor Service
Baltimore 410-467-8080

GCS Service
Silver Spring 301-585-7550

MASSACHUSETTS

Ace Service Co., Inc.
Needham 781-449-4220

MICHIGAN

Bildons Appliance Service
Detroit 248-478-3320

Commercial Kitchen Service
Bay City 517-893-4561

Midwest Food Equip. Service
Grandville 616-261-2000

MINNESOTA

GCS Service
Plymouth 800-345-4221

MISSOURI

General Parts
Kansas City 816-421-5400

Commercial Kitchen Services
St. Louis 314-890-0700

Kaemmerlen Parts & Service
St. Louis 314-535-2222

NEBRASKA

Anderson Electric
Omaha 402-341-1414

NEVADA

Burney's Commercial
Las Vegas 702-736-0006

Hi. Tech Commercial Service
N. Las Vegas 702-649-4616

NEW JERSEY

Jay Hill Repair
Fairfield 973-575-9145

Service Plus
Flanders 973-691-6300

NEW YORK

Acme American Repairs, Inc.
Brooklyn 718-456-6544

Alpro Service Co.
Brooklyn 718-386-2515

Appliance Installation
Buffalo 716-884-7425

Duffy's Equipment Services, Inc.
Buffalo 800-836-1014

3Wire Northern
Plattsburgh 800-634-5005

Duffy's Equipment Services, Inc.
Sauquoit 800-836-1014

J.B. Brady, Inc.
Syracuse 315-422-9271

NORTH CAROLINA

Authorized Appliance
Charlotte 704-377-4501

OHIO

Akron/Canton Comm. Svc. Inc.
Akron 330-753-6635

Service Solutions Group
Cincinnati 513-772-6600

Commercial Parts and Service
Columbus 614-221-0057

Electrical Appl. Repair Service
Brooklyn Heights 216-459-8700

E. A. Wichman Co.
Toledo 419-385-9121

OKLAHOMA

Hagar Rest. Service, Inc.
Oklahoma City 405-235-2184

Krueger, Inc.
Oklahoma City 405-528-8883

OREGON

Ron's Service, Inc.
Portland 503-624-0890

PENNSYLVANIA

Elmer Schultz Services
Philadelphia 215-627-5401

FAST Comm. Appl. Service
Philadelphia 215-288-4800

Appliance Installation & Service
Pittsburgh 412-809-0244

K & D Service Co.
Harrisburg 717-236-9039

Electric Repair Co.
Reading 610-376-5444

RHODE ISLAND

Marshall Electric Co.
Providence 401-331-1163

SOUTH CAROLINA

Whaley Foodservice Repair
W. Columbia 803-791-4420

TENNESSEE

Camp Electric
Memphis 901-527-7543

TEXAS

GCS Service
Fort Worth 800-433-1804

Armstrong Repair Service
Houston 713-666-7100

Cooking Equipment Specialist
Mesquite 888-866-9276

Refrigerated Specialist, Inc.
Mesquite 888-866-9276

Commercial Kitchen Repair Co.
San Antonio 210-735-2811

UTAH

La Monica's Rest. Equip. Service
Murray 801-263-3221

VIRGINIA

Daubers
Norfolk 757-855-4097

Daubers
Springfield 703-866-3600

WASHINGTON

3Wire Restaurant Appliance
Seattle 800-207-3146

WISCONSIN

A.S.C., Inc.
Madison 608-246-3160

A.S.C., Inc.
Milwaukee 414-543-6460

CANADA

ALBERTA

Key Food Equipment Service
Edmonton 780-438-1690

BRITISH COLUMBIA

Key Food Equipment Service
Vancouver 604-433-4484

Key Food Equipment Service
Victoria 250-920-4888

MANITOBA

Air Rite, Inc.
Winnipeg 204-895-2300

NEW BRUNSWICK

EMR Services, Ltd.
Moncton 506-855-4228

ONTARIO

R.G. Henderson Ltd.
Toronto 416-422-5580

Choquette - CKS, Inc.
Ottawa 613-739-8458

QUÉBEC

Choquette - CKS, Inc.
Montreal 514-722-2000

Choquette - CKS, Inc.
Québec City 418-681-3944

UNITED KINGDOM

Marren Group
Northants +44(0)1933 666233

HATCO CORPORATION
P.O. Box 340500
Milwaukee, WI 53234-0500 U.S.A.
(800) 558-0607 (414) 671-6350
Parts and Service Fax (800) 690-2966
International Fax (414) 671-3976
partsandservice@hatcocorp.com
www.hatcocorp.com