



Project _____

Item # _____

Quantity _____

Glo-Max® Stainless Steel Infrared Strip Heaters

Models: GMH-24, -36, -48, -60, -72



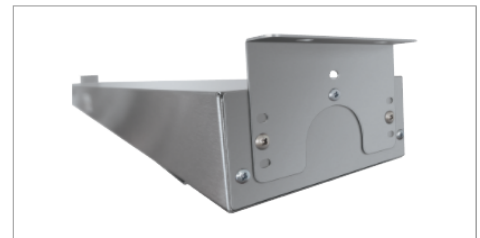
Safely hold the temperature of your product without drying out or further cooking food with Hatco's Glo-Max® Infrared Stainless Steel Strip Heaters. The end result is hot, fresh food that's ready to serve. The stainless steel housing and heavy-duty mountings ensure the durability and quality of Hatco products.

Standard features

- Prefocused heat pattern covers the entire holding surface
- Consistent holding temperatures with no "cold spots"
- Available in 612mm[24"], 917mm[36"], 1222mm[48"], 1527mm[60"], 1832mm[72"]
- High watt models only
- Protective wire guards under heating element
- Insulation minimizes heat loss
- Standard height-adjustable mounting tabs, ready to install quickly and easily
- All units single phase only
- Built-in toggle switch with pilot light
- Infinite switch with pilot light optional



GMH-48



For operation, location and safety information, please refer to the Installation and Operating Manual.



HATCO CORPORATION | P.O. Box 340500 Milwaukee, WI 53234-0500 U.S.A. | (800) 558-0607 | (414) 671-6350

www.hatcocorp.com | support@hatcocorp.com

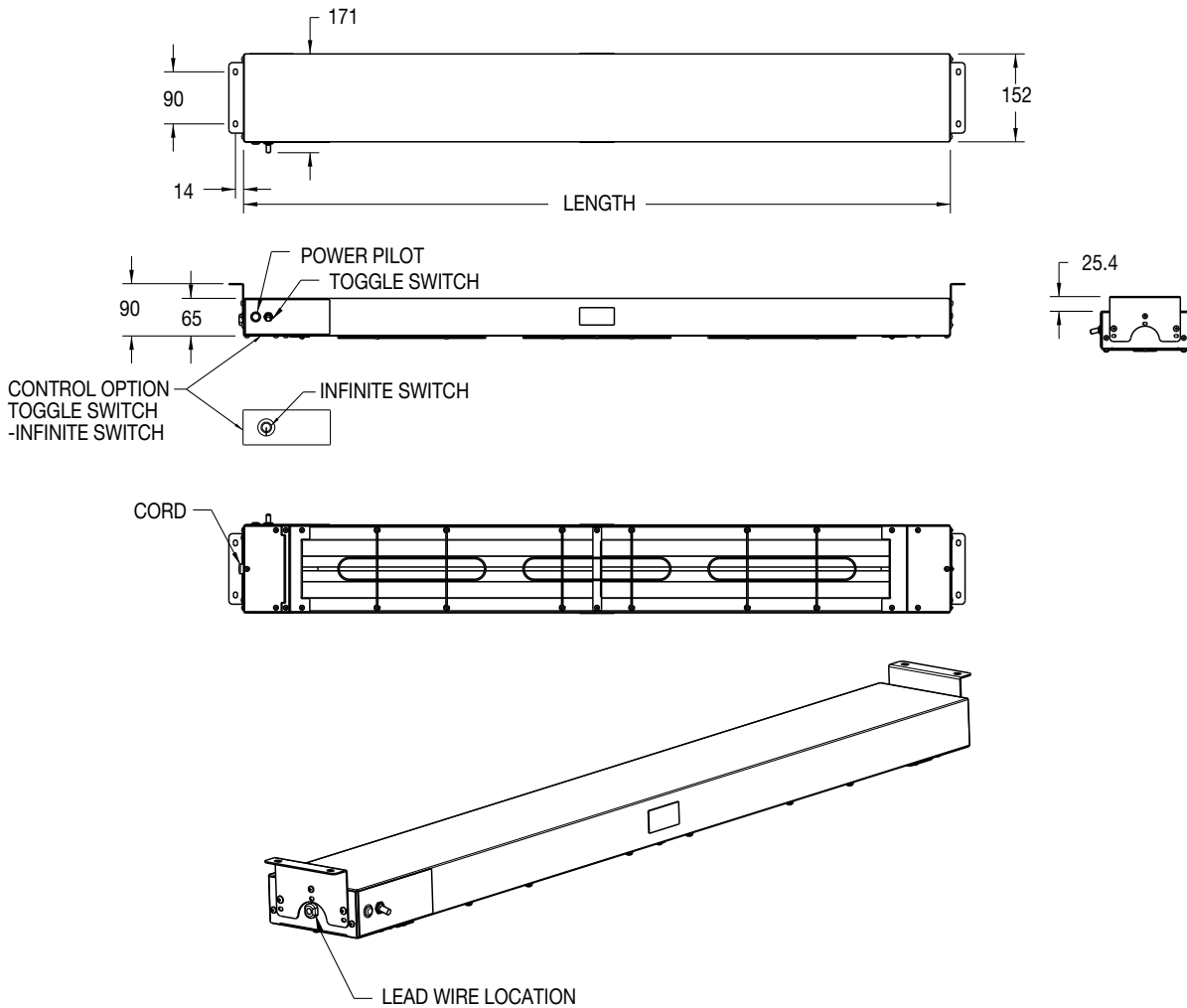


Glo-Max® Stainless Steel Infrared Strip Heaters

Models: GMH-24, -36, -48, -60, -72

GMH

VOLTAGE	RATING	GMH-24	GMH-36	GMH-48	GMH-60	GMH-72	COUNTRY CODE
220-230	WATTS	500~546	800~774	1100~1202	1400~1530	1725~1885	ZZ, C, AA
	AMPS	2.3~2.4	3.6~3.8	5.0~5.2	6.4~6.7	7.8~8.2	
230-240	WATTS	459~500	735~8500	1010~1100	1286~1400	1584~1725	UK
	AMPS	1.9~2.1	3.2~3.3	4.4~4.6	5.4~5.8	6.6~7.2	
220	WATTS	500	800	1100	1400	1725	SA
	AMPS	2.3	3.6	5.0	6.4	7.8	
	LENGTH	612mm[24"]	917mm[36"]	1222mm[48"]	1527mm[60"]	1832mm[72"]	





Glo-Max® Stainless Steel Infrared Strip Heaters

Models: GMH-24, -36, -48, -60, -72

TOGGLE SWITCH

Toggle Switch: Max. 15 amps. Location: Chef's left side standard.

Infinite Switch: Max 12.2 amps. Location: Chef's left side standard.

LEADS

42" (1067) wire leads.

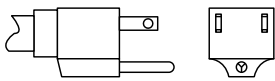
PLUG CONFIGURATIONS

Please refer to electrical specification chart.

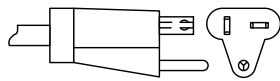
Standard comes without any plug.

Please specify wire leads length and plug type if needed.

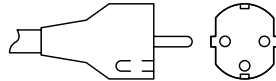
NEMA 5-15P



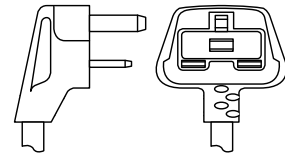
NEMA 5-20P



CEE 7-7 Schuko



BS-1363



RECOMMENDED MOUNTING HEIGHTS

[\(Refer to the Installation section of the Manual on the Hatco website\)](#)

High Watt: 11"-14" (279-356 mm)

MINIMUM CLEARANCES

Combustibles

Below overshelf: 1" (25 mm) clearance.

Unit to surface below: High watt, 13.5" (343 mm)

Unit to wall: 3" (76 mm).

Non-Combustibles

Hardwired with Built-In Switches:

Must be installed in a pass through area.

Below overshelf: 1" (25 mm) clearance.

Unit to surface below:

High watt with On/Off toggle switch - 8" (203 mm).

Corded Units with Built-In Switches:

Must be installed in a pass through area.

Below overshelf: 3" (76 mm) clearance.

Unit to surface below: High watt: 11" (279 mm)

PRODUCT SPECS

Infrared Foodwarmers

The Infrared Foodwarmer shall be a Glo-Max®, manufactured by the Hatco Corporation.

The Strip Heater shall be a Glo-Max model ... , rated at ... watts, ... volts, single phase and be ... inches (millimeters) in overall width. The Glo-Max shall consist of a stainless steel housing and include as standard equipment two stainless steel shelf mounting tabs and a built-in on-off toggle switch.

The infrared heating element shall be tubular metal sheathed. The foodwarmer shall be factory assembled ready for electrical installation.